

GNP

GNP

TRACT 11
0.939 Ac.

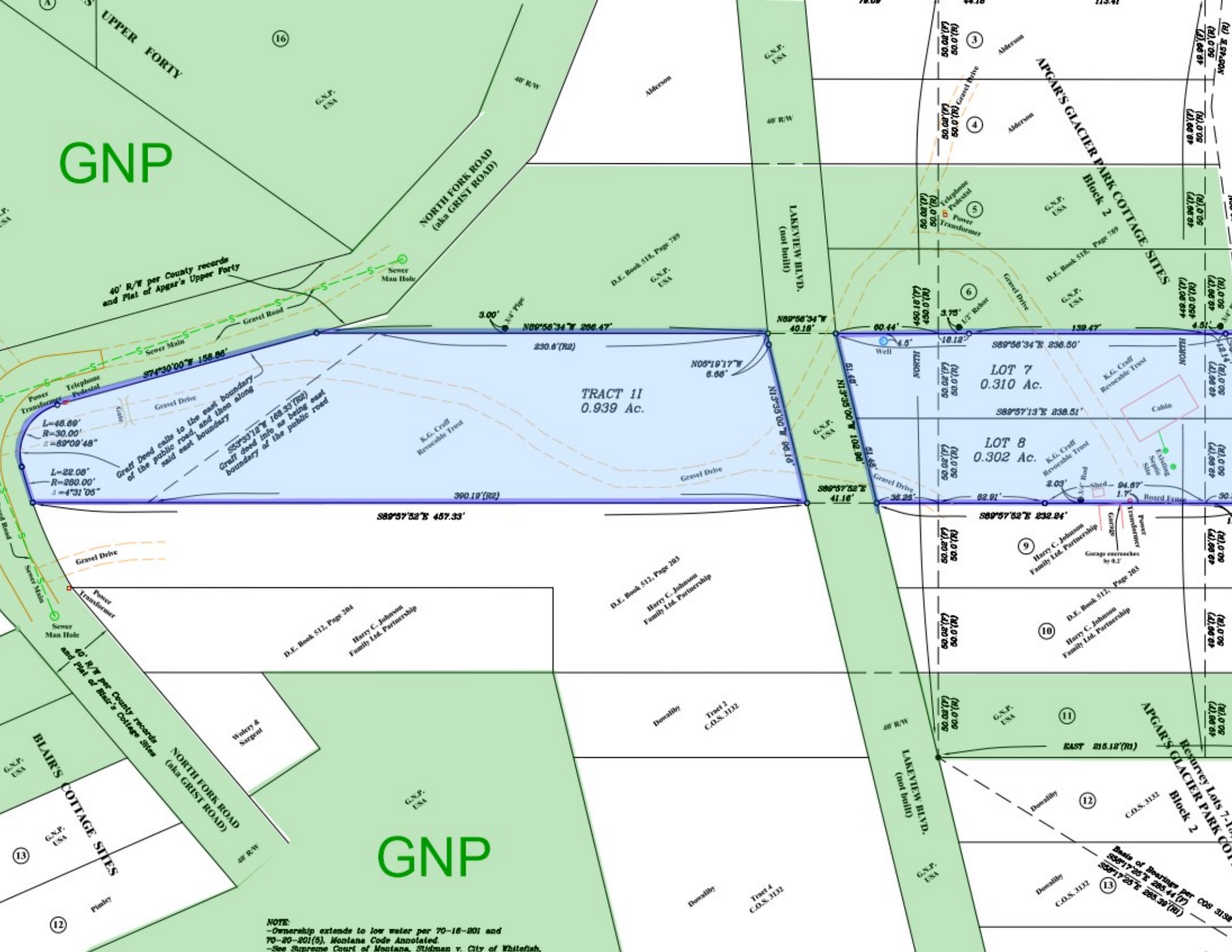
LOT 7
0.310 Ac.

LOT 8
0.302 Ac.

APGAR'S GLACIER PARK COTTAGE SITES
Block 2
D.E. Book 518, Page 789

APGAR'S GLACIER PARK COTTAGE SITES
Block 2
D.E. Book 512, Page 783

NOTE:
-Ownership extends to low water per 70-16-801 and 70-20-201(5), Montana Code Annotated.
-See Supreme Court of Montana, Stidman v. City of Whitefish.



40' R/W per County records and Plat of Apgar's Upper Forty

L=46.66'
R=30.00'
Δ=89°09'48"

L=22.00'
R=260.00'
Δ=4°31'05"

BLAIR'S COTTAGE SITES
D.E. Book 512, Page 204
Harry C. Johnson Family Ltd. Partnership

D.E. Book 512, Page 203
Harry C. Johnson Family Ltd. Partnership

D.E. Book 512, Page 203
Harry C. Johnson Family Ltd. Partnership

State of Montana per COS 3152
580°17'25" E 285.44' (R)
580°17'25" E 285.30' (R)